

# Part 4

## Pumpkin Square

*This patch uses the tapestry crochet method.*

Make 2 of each in the yarns below:

Pumpkin 1 – Background yarn B, pumpkin in yarn C and stalk yarn E

Pumpkin 2 – Background yarn C, pumpkin in yarn E and stalk yarn D

Pumpkin 3 – Background yarn D, pumpkin in yarn B and stalk yarn C

Pumpkin 4 – Background yarn E, pumpkin in yarn D and stalk yarn B



## Tension

16 sts x 17 rows worked in dc to measure

10cmx10cm

using 5.5mm crochet hook, or hook required to meet stated

tension. This patch should measure 17cmx17cm

Using Yarn B and 5.5mm hook chain 27.

*Follow chart or written instructions.*

**Row 1 [RS]:** 1dc in 2nd ch from hook, \* 1dc into next ch, rep from \* to end, turn (26 sts).

**Row 2 [WS]:** Ch1, 26dc in YB, turn.

**Row 3:** Ch1, 26dc in YB, turn.

**Row 4:** Ch1, 7dc in YB, [1dc in YC, Bbl in YC] twice, 4dc in YB, [bbl in YC, 1dc in YC] twice, 1dc in YC, 6dc in YB, turn.

**Row 5:** Ch1, 5dc in YB, 7dc in YC, 2dc in YB, 6dc in YC, 6dc in YB, turn.

**Row 6:** Ch1, 5dc in YB, 1dc in YC, [Bbl in YC, 1dc in YC] 8 times, 4dc in YB, turn.

**Row 7:** Ch1, 3dc in YB, 19dc in YC, 4dc in YB, turn.

**Row 8:** Ch1, 4dc in YB, 1dc in YC, [Bbl in YC, 1dc in YC] 9 times, 3dc in YB, turn.

**Row 9:** Ch1, 2dc in YB, 21dc in YC, 3dc in YB, turn.

**Row 10:** Ch1, 3dc in YB, 1dc in YC, [Bbl in YC, 1dc in YC] 10 times, 2dc in YB, turn.

**Row 11:** Ch1, 2dc in YB, 21dc in YC, 3dc in YB, turn.

**Row 12:** Ch1, 3dc in YB, Bbl in YC, [1dc in YC, Bbl in YC] 10 times, 2dc in YB, turn.

**Row 13:** Ch1, 2dc in YB, 21dc in YC, 3dc in YB, turn.

**Row 14:** Ch1, 4dc in YB, Bbl in YC, [1dc in YC, Bbl in YC] 9 times, 3dc in YB, turn.

**Row 15:** Ch1, 4dc in YB, 17dc in YC, 5dc in YB, turn.

**Row 16:** Ch1, 6dc in YB, [Bbl in YC, 1dc in YC] 3 times, 3dc in YE, [1dc in YC, Bbl in YC] 3 times, 5dc in YB, turn.

**This pattern has been designed by Helen Smith for Knitcraft by Hobbycraft.**

**This pattern is for personal use only, not to be resold. or reproduced.**

# Part 4

**Row 17:** Ch1, 8dc in YB, 2dc in YC, 5dc in YE, 2dc in YC, 9dc in YB, turn.

**Row 18:** Ch1, 11dc in YB, 5dc in YE, 10dc in YB, turn.

**Row 19:** Ch1, 10dc in YB, 5dc in YE, 11dc in YB, turn.

**Row 20:** Ch1, 12dc in YB, 4dc in YE, 10dc in YB, turn.

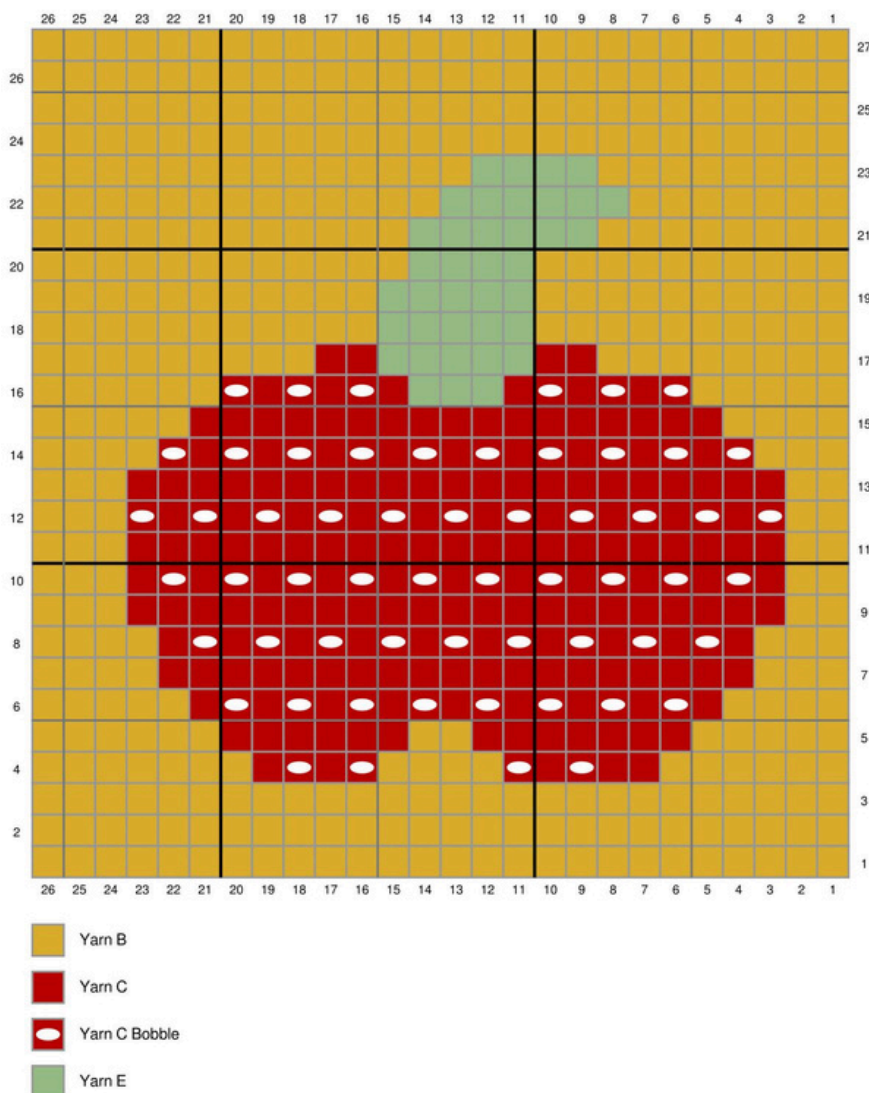
**Row 21:** Ch1, 8dc in YB, 6dc in YE, 12dc in YB, turn.

**Row 22:** Ch1, 13dc in YB, 6dc in YE, 7dc in YB, turn.

**Row 23:** Ch1, 8dc in YB, 4dc in YE, 14dc in YB, turn.

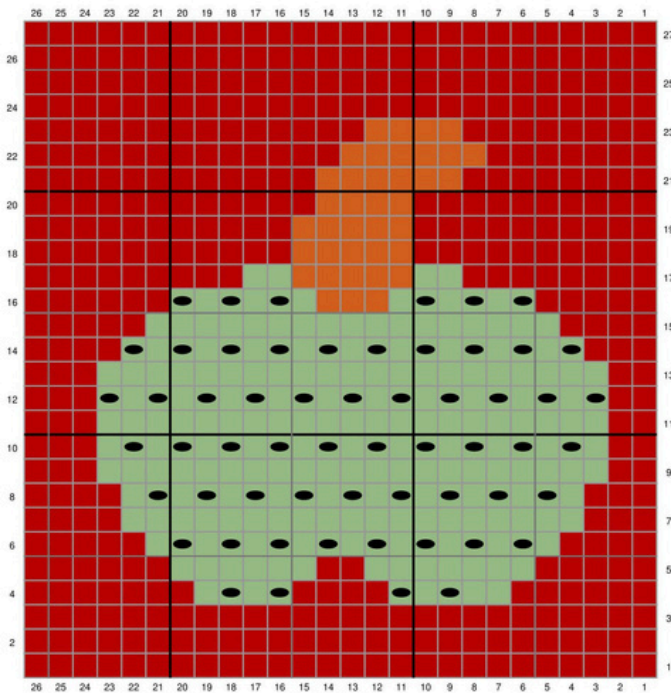
**Rows 24 to 27:** Ch1, 26dc in YB, turn.

Fasten off and sew in ends.

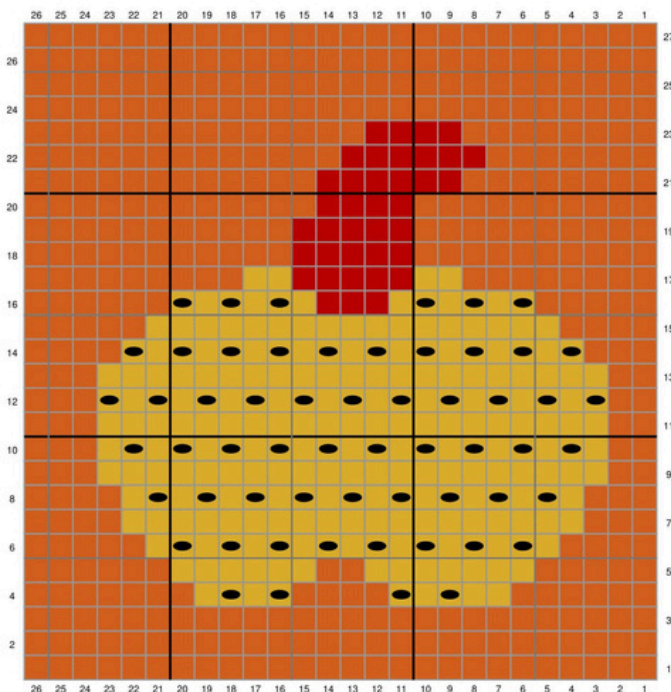


This pattern has been designed by Helen Smith for Knitcraft by Hobbycraft.  
 This pattern is for personal use only, not to be resold. or reproduced.

# Part 4



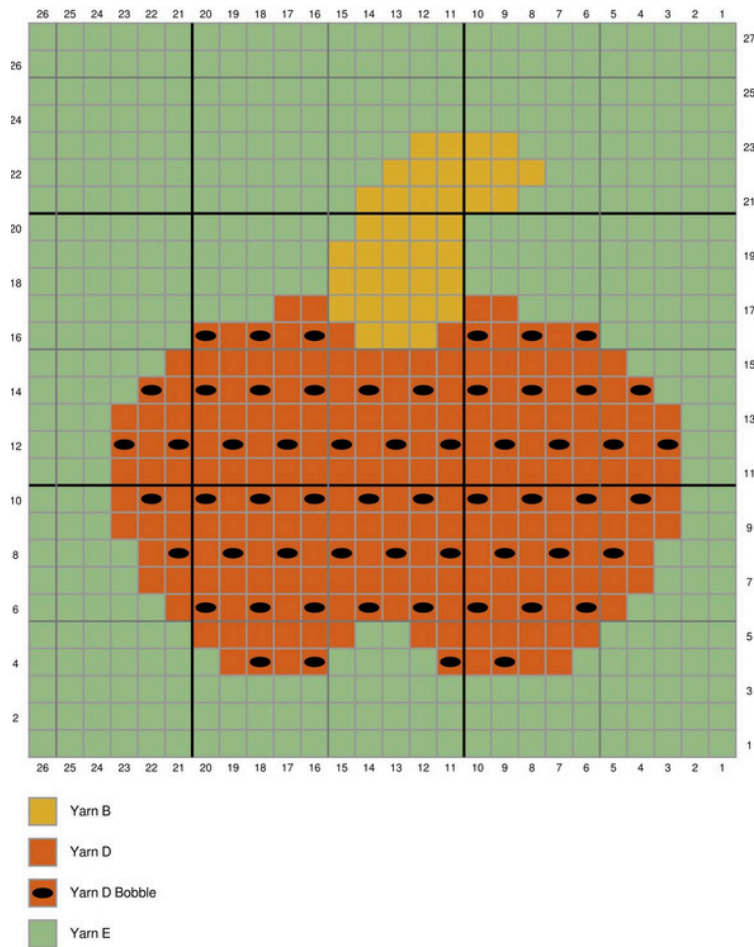
- Yarn C
- Yarn D
- Yarn E
- Yarn E Bobble



- Yarn B
- Yarn B Bobble
- Yarn C
- Yarn D

This pattern has been designed by Helen Smith for Knitcraft by Hobbycraft.  
 This pattern is for personal use only, not to be resold. or reproduced.

# Part 4



This pattern has been designed by Helen Smith for Knitcraft by Hobbycraft.  
 This pattern is for personal use only, not to be resold, or reproduced.