

Part 1

Toadstool Square

This patch uses the tapestry crochet method.

Make 4 with yarn B, yarn A and yarn C.

Tension

16 sts x 17 rows worked in dc to measure
10cmx10cm

using 5.5mm crochet hook, or hook required to
meet stated

tension. This patch should measure 17cmx 17cm



Using Yarn B and 5.5mm hook chain 27.

Follow chart or written instructions.

Row 1 [RS]: 1dc in 2nd ch from hook, * 1dc into next ch, rep from * to end, turn (26 sts).

Row 2 [WS]: Ch1, 26dc in YB, turn.

Row 3: Ch1, 26dc in YB, turn.

Row 4: Ch1, 26dc in YB, turn.

Row 5: Ch1, 11dc in YB, 4dc in YA, 11dc in YB, turn.

Row 6: Ch1, 10dc in YB, 6dc yarn A, 10dc in YB, turn.

Rows 7-9: Ch1, 9dc in YB, 8dc in YA, 9dc in YB, turn.

Rows 10-11: Ch1, 10dc in YB, 6dc in YA, 10dc in YB, turn.

Rows 12-13: Ch1, 11dc in YB, 4dc in YA, 11dc in YB, turn.

Row 14: Ch1, 9dc in YB, 8dc in YC, 9dc in YB, turn.

Row 15: Ch1, 6dc in YB, 14dc in YC, 6dc in YB, turn.

Row 16: Ch1, 5dc in YB, 2dc in YC, Bbl in YA, 5dc in YC, Bbl in YA, 4dc in YC, Bbl in YA, 2dc in YC, 5dc in YB, turn.

Row 17: Ch1, 5dc in YB, 16dc in YC, 5dc in YB, turn.

Row 18: Ch1, 5dc in YB, 1dc in YC, Bbl in YA, 4dc in YC, Bbl in YA, [3dc in YC, Bbl in YA] twice, 1dc in YC, 5dc in YB, turn.

Row 19: Ch1, 5dc in YB, 16dc in YC, 5dc in YB, turn.

Row 20: Ch1, 6dc in YB, 2dc in YC, Bbl in YA, 4dc in YC, Bbl in YA Bbl, 3dc in YC, Bbl in YA, 2dc in YC, 6dc in YB, turn.

Row 21: Ch1, 7dc in YB, 12dc in YC, 7dc in YB, turn.

Row 22: Ch1, 8dc in YB, 2dc in YC, Bbl in YA, 3dc in YC, Bbl in YA, 3dc in YC, 8dc in YB, turn.

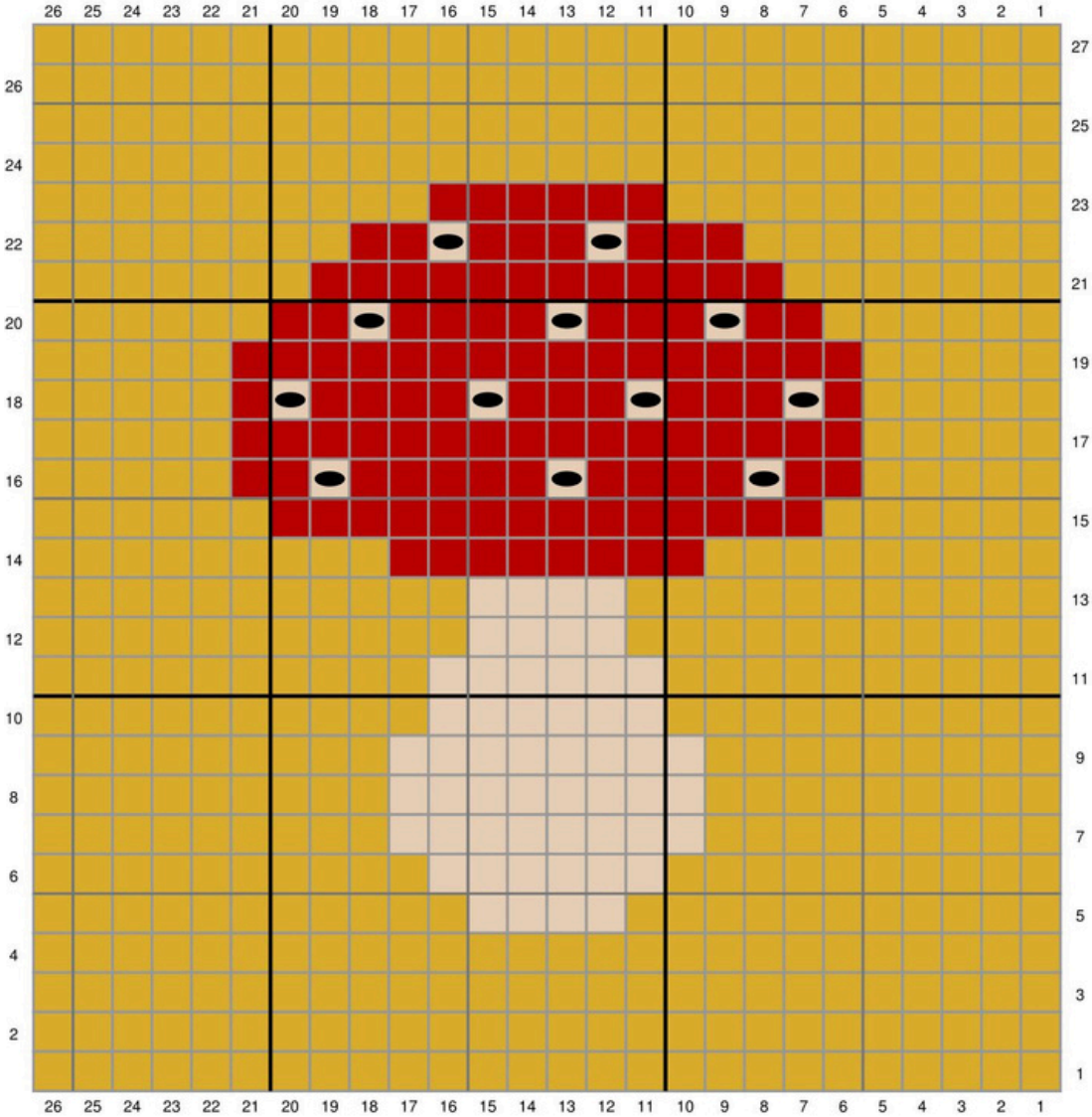
Row 23: Ch1, 10dc in YB, 6dc in YC, 10dc in YB, turn.

Rows 24-27: Ch1, 26dc in YB, turn.

Break yarn and fasten off. Sew ends in

This pattern has been designed by Helen Smith for Knitcraft by Hobbycraft.
This pattern is for personal use only, not to be resold. or reproduced.

Toadstool Square



- Yarn A
- Yarn A Bobble
- Yarn B
- Yarn C